

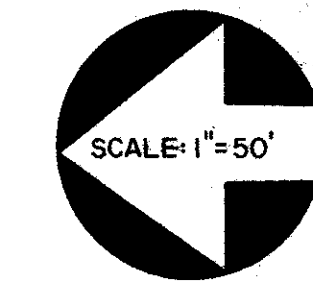
42/2

# LEE'S CROSSING PLAT NO. 2 (P.U.D.)

LYING IN THE EAST ONE-HALF OF SECTION 34, TOWNSHIP 44 SOUTH, RANGE 42 EAST, PALM BEACH COUNTY, FLORIDA.

JANUARY, 1981

SHEET 2 OF 5



2

STATE OF FLORIDA  
COUNTY OF PALM BEACH  
THIS PLAT WAS FILED FOR  
RECORD AT  
THIS DAY OF  
AD. 1981 AND DULY RECORDED  
IN PLAT BOOK ON PAGES  
AND  
JOHN B. DUNKLE, CLERK  
CIRCUIT COURT  
BY: DC.

NO	DELTA	RADIUS	LENGTH
C1	20°53'09"	110.00	40.10
C2	21°11'21"	140.00	51.78
C3	13°35'07"	140.00	33.20
C4	13°35'07"	110.00	26.08
C5	21°40'11"	125.00	47.28
C6	13°35'07"	125.00	28.64
C7	5°02'54"	395.00	34.80
C8	4°56'16"	395.00	34.04
C9	4°56'16"	395.00	34.04
C10	11°00'31"	395.00	34.13
C11	5°07'40"	395.00	35.35
C12	3°50'44"	520.00	34.90
C13	3°45'37"	520.00	34.13
C14	3°48'10"	520.00	34.51
C15	2°12'18"	520.00	20.01
C16	3°48'59"	520.00	34.64
C17	2°16'16"	520.00	20.61
C18	3°38'51"	140.00	8.91
C19	9°56'16"	140.00	24.28
C20	7°57'00"	140.00	19.43
C21	1°14'21"	140.00	32.35
C22	3°04'48"	630.00	33.97
C23	0°44'46"	630.00	8.21
C24	17°03'50"	305.00	90.84
C25	5°56'22"	305.00	32.65
C26	5°56'12"	305.00	31.60
C27	20°38'24"	305.00	109.87
C28	1°58'47"	305.00	10.87
C29	3°10'08"	360.00	20.19
C30	4°37'12"	365.00	29.43
C31	4°31'41"	365.00	28.49
C32	4°31'41"	365.00	28.49
C33	9°16'24"	365.00	59.08
C34	3°10'08"	335.00	18.53
C35	13°48'05"	335.00	60.70
C36	23°00'31"	335.00	134.50
C37	8°55'35"	370.00	57.65
C38	5°47'31"	480.00	48.52
C39	6°18'55"	435.00	47.99

NO BEARING	DISTANCE	NO BEARING	DISTANCE
T1	N10°30'00"E	T37	S56°17'06"W
T2	N82°15'10"W	T38	S33°50'35"E
T3	N77°40'54"W	T39	S86°09'29"W
T4	N77°40'54"W	T40	S82°59'14"E
T5	S10°30'00"W	T41	S82°59'14"E
T6	S10°30'00"W	T42	N84°14'16"E
T7	S35°24'36"E	T43	N84°14'16"E
T8	S18°37'38"E	T44	N10°30'00"E
T9	N53°01'35"W	T45	S77°59'47"E
T10	S84°14'16"W	T46	N84°14'16"E
T11	N07°48'23"E	T47	S82°59'14"E
T12	N26°48'14"W	T48	S75°50'05"E
T13	N00°00'00"E	T49	N00°00'00"E
T14	S63°09'10"E	T50	N71°22'22"E
T15	N22°38'42"W	T51	
T16	N00°00'00"E	T52	S77°59'47"E
T17	N00°00'00"E	T53	S77°59'47"E
T18	S24°33'29"E	T54	S77°59'47"E
T19	S36°18'54"W	T55	N84°14'16"E
T20	N00°00'00"E	T56	N73°25'54"E
T21	S78°11'50"E	T57	S61°30'51"E
T22	S10°30'00"W	T58	S75°18'23"E
T23	S79°30'00"W	T59	S75°50'05"E
T24	S80°45'10"E	T60	
T25	S12°04'13"W	T61	S89°10'37"E
T26	S80°45'10"E	T62	S81°30'51"E
T27	S33°42'54"E	T63	S75°18'23"E
T28	S48°48'15"W	T64	S79°30'00"E
T29		T65	S82°59'14"E
T30	N41°30'06"E	T66	S86°02'53"E
T31	S66°23'24"W	T67	S86°02'53"E
T32	S67°21'18"W	T68	S77°40'54"E
T33	S53°32'05"E	T69	N00°00'00"E
T34	S56°10'57"E	T70	S00°00'00"E
T35	S37°41'33"E	T71	S85°22'05"W
T36		T72	S13°07'05"W
T37		T73	S13°07'05"W
T38		T74	S53°32'06"W
T39		T75	S79°30'00"E
T40		T76	S79°30'00"E
T41		T77	
T42		T78	S97°41'33"E
T43		T79	S77°14'37"E
T44		T80	S66°10'57"E
T45		T81	S77°59'47"E
T46		T82	N56°10'57"E
T47		T83	S77°14'37"E
T48		T84	S77°14'37"E
T49		T85	S81°19'07"E
T50		T86	S89°18'46"E
T51		T87	S53°42'54"E
T52		T88	
T53		T89	N56°17'06"E
T54		T90	S36°27'54"E
T55		T91	S00°00'00"E
T56		T92	S77°40'54"E
T57		T93	S77°40'54"E
T58		T94	S82°15'10"E
T59		T95	S61°11'50"E
T60		T96	S33°50'35"E
T61		T97	S82°15'10"E
T62		T98	S78°11'50"E
T63		T99	S78°11'50"E
T64		T100	S71°22'22"W
T65		T101	S71°22'22"W
T66		T102	S71°22'22"W
T67		T103	S71°22'22"W
T68		T104	S75°20'35"W
T69		T105	S75°20'35"W
T70		T106	S75°20'35"W
T71		T107	S00°00'00"E
T72		T108	S80°45'10"E
T73		T109	S80°45'10"E
T74		T110	S56°09'25"W
T75		T111	S77°59'47"E
T76		T112	S78°11'50"E
T77		T113	S84°14'16"E
T78		T114	S63°09'10"E
T79		T115	S63°09'10"E
T80		T116	S75°18'23"E
T81		T117	S78°18'23"E
T82		T118	S65°41'04"E
T83		T119	S79°30'00"E
T84		T120	S81°19'57"E
T85		T121	S77°40'54"E
T86		T122	S82°15'10"E
T87		T123	S79°30'00"E
T88		T124	S79°30'00"E
T89		T125	S75°50'05"E
T90		T126	S81°30'51"E
T91		T127	S75°18'23"E
T92		T128	S84°14'16"E
T93		T129	S75°50'05"E
T94		T130	S75°50'05"E
T95		T131	N75°20'35"E
T96		T132	S84°14'16"E
T97		T133	S53°01'35"E
T98		T134	S84°14'16"E
T99		T135	S73°25'54"E
T100		T136	S73°25'54"E
T101		T137	S30°00'59"W
T102		T138	S30°00'59"W
T103		T139	S30°00'59"W
T104		T140	S30°00'59"W
T105		T141	S56°17'06"W
T106		T142	S33°42'54"E
T107		T143	S33°42'54"E
T108		T144	S36°27'54"E
T109		T145	S56°10'57"E
T110		T146	S81°14'16"E
T111		T147	S79°30'00"E
T112		T148	S53°32'06"W
T113		T149	S89°18'23"E
T114		T150	S81°14'16"E
T115		T151	S38°36'09"W
T116		T152	S38°36'09"W
T117		T153	S89°18'23"E
T118		T154	S42°05'28"E
T119		T155	S22°00'31"E
T120		T156	S51°24'24"E

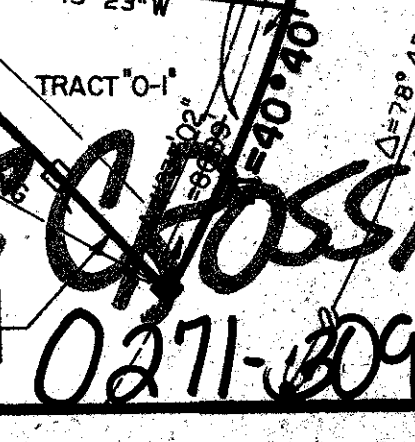
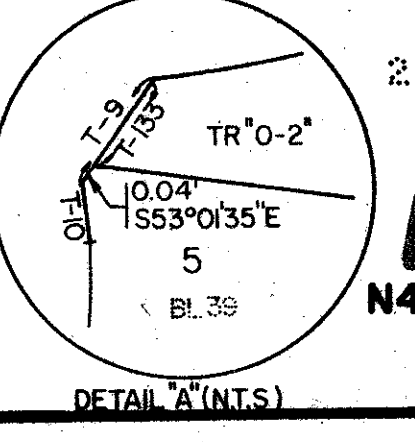
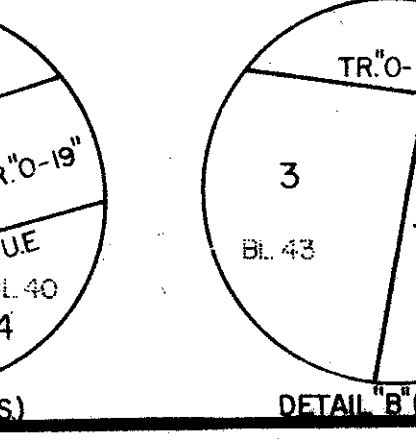
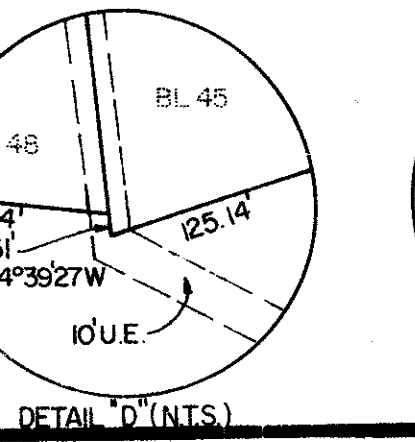
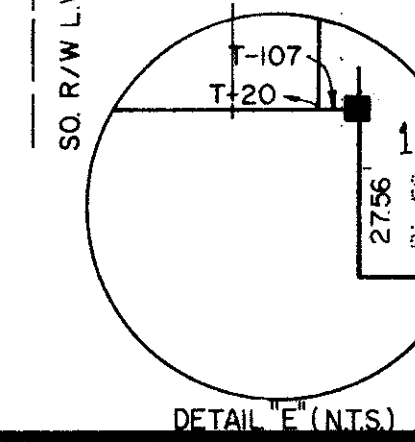
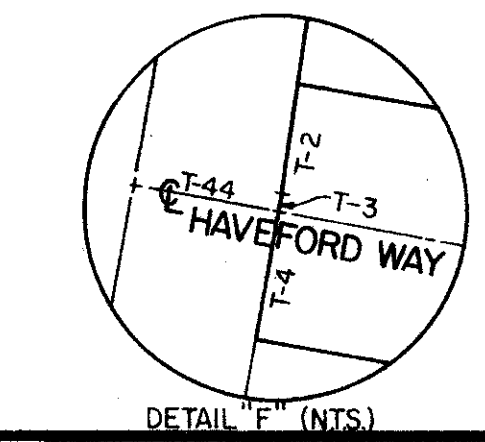


WATER MANAGEMENT TRACT "A"  
DRAINAGE EASEMENT  
(DEDICATED TO LEE'S CROSSING HOMEOWNERS ASSOCIATION, INC.)

LWDD CANAL L-15  
AS PER O.R.B. 2883, PGS. 1564-1565

N00°00'00"E 2709.41' (TOTAL)

SPRINGHILL PLAT NO. 1  
PB.33, PGS. 170-171



LEE'S CROSSING  
N46°55'43"E  
41.84'  
0271-809-142/2

Meridian  
Surveying and Mapping, Inc.  
2228 St. Augustine Ave.  
Palm Beach, Florida 33480  
Tel: 561-853-1111